

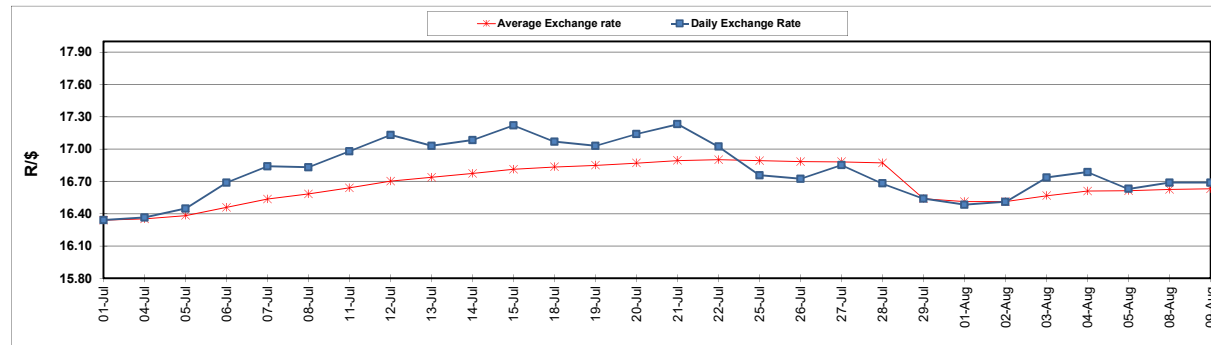
	PETROL 95 ULP	PETROL 93 ULP & LRP	DIESEL 0.05%	DIESEL 0.005%	ILL. PAR.
GAUTENG PUMP PRICE (SA c/l) AS FROM 03/08/2022	2,542.000	2,499.000	-	-	-
WHOLESALE PRICE (SA c/l) AS FROM 03/08/2022	-	-	2,452.440	2,461.840	1,842.288
SINGLE NATIONAL MAXIMUM RETAIL PRICE	-	-	-	-	2,431.000
BASIC FUEL PRICE - 09/08/2022 (SA c/l)	1,248.499	1,223.066	1,365.334	1,384.366	1,416.554
PRESS RELEASE CONTRIBUTION TO BFP 03/08/2022 - 09/08/2022 (SA c/l)	1,482.410	1,439.410	1,600.630	1,610.030	1,624.128
UNIT OVER/(UNDER) RECOVERY - 09/08/2022 (SA c/l)	233.911	216.344	235.296	225.664	207.574
AVERAGE BASIC FUEL PRICE 29/07/2022 - 09/08/2022	1,287.294	1,258.866	1,418.417	1,433.120	1,473.625
AVERAGE UNIT OVER/(UNDER) RECOVERY 29/07/2022 - 09/08/2022	272.741	258.169	243.338	239.160	204.503

### ANALYSIS MOVEMENT OF AVERAGE OVER/(UNDER) RECOVERY

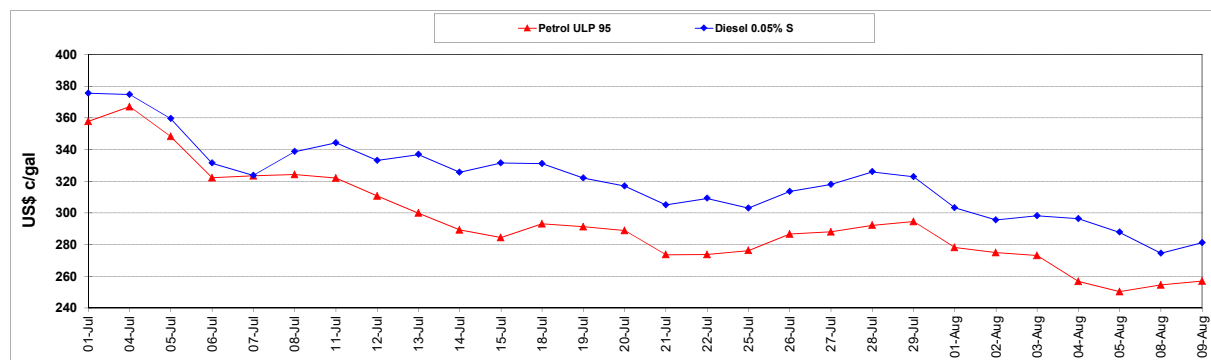
	PETROL 95	PETROL 93	DIESEL 0.05%	DIESEL 0.005%	ILL. PAR.
- MOVEMENT IN INTERNATIONAL PRODUCT PRICES	254.181	240.019	222.887	218.497	183.256
- MOVEMENT IN EXCHANGE RATE	18.560	18.150	20.451	20.663	21.247
AVERAGE UNIT OVER/(UNDER) RECOVERY 29/07/2022 - 09/08/2022	272.741	258.169	243.338	239.160	204.503

R/\$ EXCHANGE RATE - (R/\$16.6875 - 09/08/2022)

### EXCHANGE RATE USED IN BASIC FUEL PRICE



### INTERNATIONAL PRODUCT PRICES OF BASKET USED IN BASIC FUEL PRICE



### BASIC FUEL PRICE IN SA CENTS PER LITRE

